

Silver Anniversary

2017 WORLD BEEF EXPO

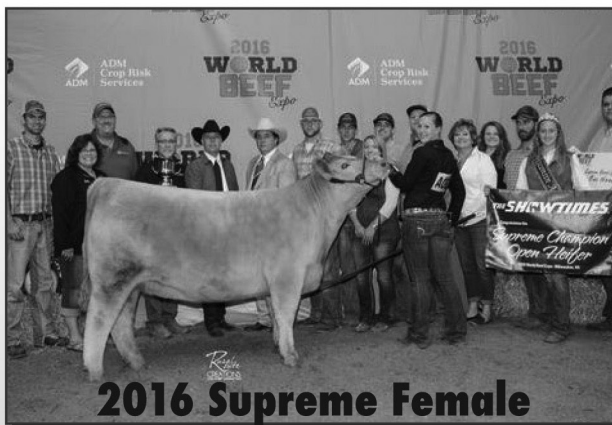
September 22nd thru September 24th
MULTI BREED & CLUB CALF SHOWCASE SALE
SATURDAY, SEPTEMBER 23RD, 2017



2016 Supreme Bull



2016 Supreme Cow/Calf Pair



2016 Supreme Female

The Midwest National Belted Galloway Sale will be held in conjunction with the Multi-Breed & Club Calf Showcase Sale.

Call to consign!

WORLD BEEF EXPO ENTRY FORMS ARE AVAILABLE ONLINE AT
WWW.LARRYMARTINLIVESTOCK.COM OR WWW.WORLDBEEFEXPO.COM



Larry Martin Cattle Sales

217-433-0242

lmcs2000@yahoo.com

www.larrymartinlivestock.com

www.facebook.com/LarryMartinLivestock

Greg Miller, Marketing Consultant - 608-778-8785

This sale will be broadcast live on the internet.

DVAuction

Broadcasting Real-Time Auctions

Real time bidding & proxy bidding available.

25th Annual
WORLD BEEF
Expo

Ad design by rnk designs & livestock marketing